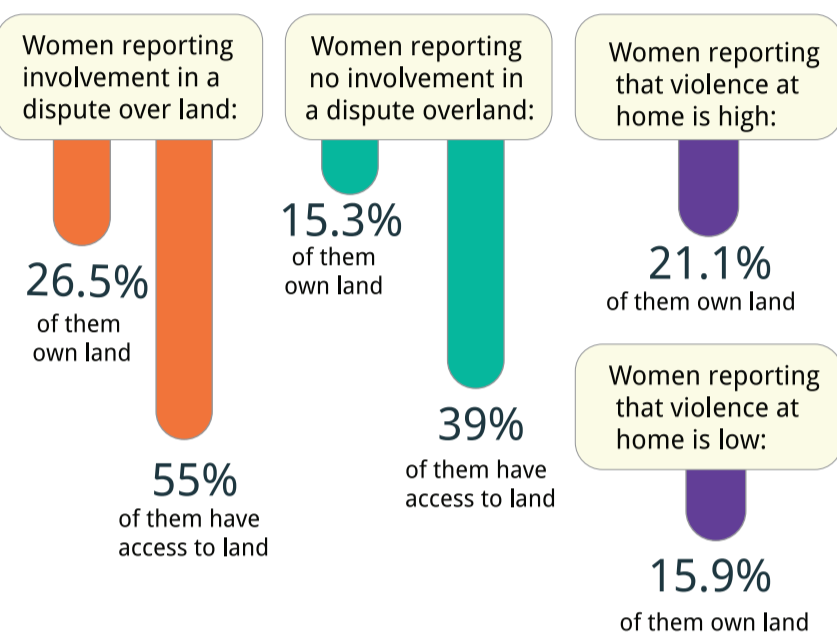
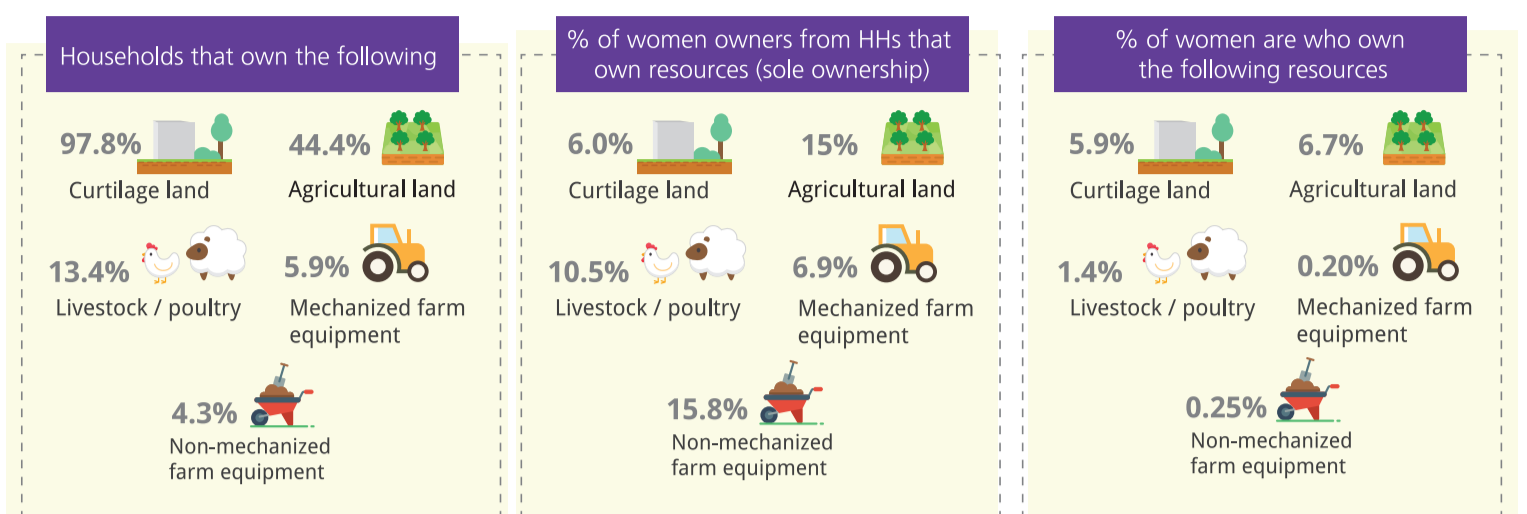
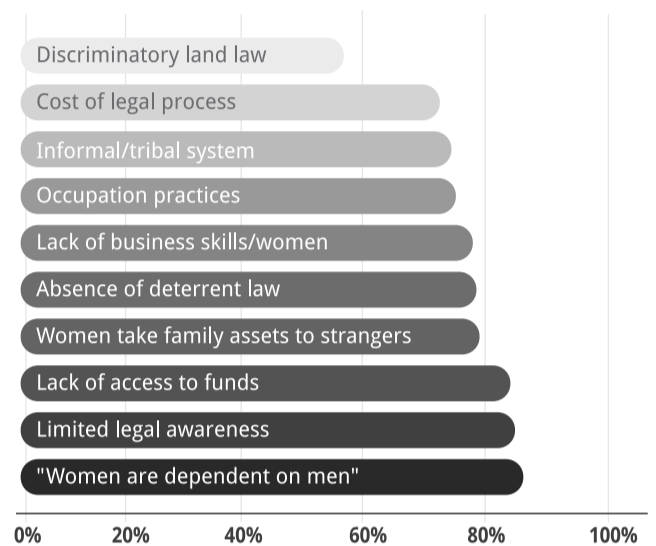


Palestinian Women's Access to Land and Productive Resources – Results of a Study



Key barriers to women's ownership of land and productive resources

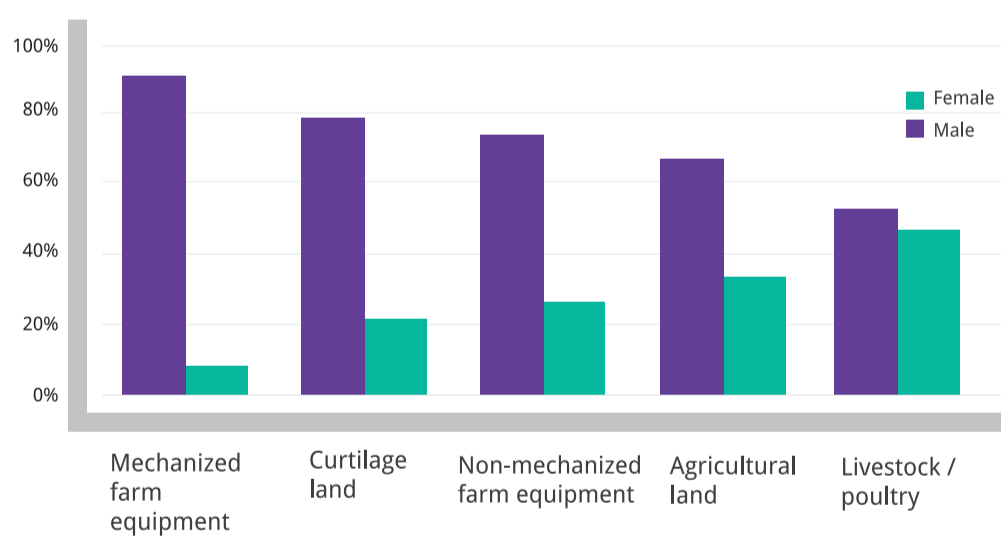


- 75%** of surveyed women believe that violence resulting from land disputes is high or moderate in their communities
- 13%** of the women respondents report being involved in a family dispute over land
- 67%** of the disputes are around land inheritance
- 71%** of the disputes were never resolved

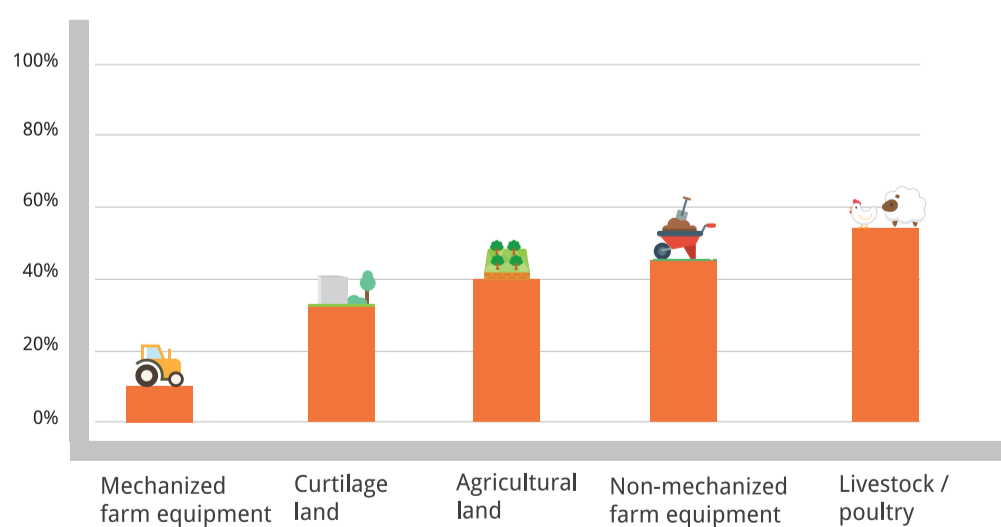


As much as **84%** of Palestinian women do not own any type of land

Relative level of Decision-Making Power Regarding Land and Reproductive Resources



Reported Level of Access to Land and Reproductive Resources by Women (% from households that own these resources)



This info-graphic is based on a study issued by the Palestinian Working Woman Society for Development (PWWSD). The survey was administered to 493 women in 5 governorates in the West Bank (Jenin, Qalqilya, Jericho and the Jordan Valley, Bethlehem and Hebron) and 3 governorates in Gaza Strip (North Gaza, Khan Yunis, and Rafah). In-depth interviews were conducted with 60 women, men, and key informants and focus groups discussions (FGDs) with 60 women and key informants. The study was carried out by AWRAD. The full study is available on: www.pwwsd.org 2020

This material is completely or partly financed by the Swedish International Development Cooperation Agency (Sida) and We Effect. Sida and We Effect does not necessarily agree with the opinions expressed.